

## THE CITY OF TIRANA

### History

Tirana, the capital and largest city of Albania, boasts a rich history dating back to the Palaeolithic era, some 10,000 to 30,000 years ago. Originally named Tërana by the Illyrians, the city itself is relatively modern, founded in 1614 by Sulejman Pashe Bargjini, a regional feudal lord. Its strategic geographic location, nestled between mountains and sea, in the heart of Albania, has made Tirana a magnet for residents. Modern Tirana witnessed significant growth in the 18th century. However, it gained prominence as Albania's capital in 1920, chosen for its central geographical position on the fault line between the northern Ghegs and the southern Tosks. The city's transformation into a capital, especially under Italian influence in the late 1920s, marked the beginning of its distinct appearance. Today, Tirana stands as the political, economic, and cultural center of Albania, hosting approximately 1,000,000 inhabitants. Recent years have seen substantial changes in the city's appearance, reflecting its dynamic nature.



### Connectivity

Tirana's strategic location is complemented by an efficient transportation network. Nene Tereza International Airport serves as a key hub, offering access from 99 destinations across Europe, Turkey, North Africa, and the Middle East through 29 airlines. Well-established regional, national, and local transportation options ensure smooth connectivity within Tirana and its surrounding Albanian and Balkan major cities.



TIRANA CAMPUS



**SIGN UP TO OUR NEWSLETTER**  
TO RECEIVE ALL THE LATEST UPDATES



TIRANA CAMPUS

info.tirana@coleurope.eu | coleurope.eu

## THE COLLEGE OF EUROPE

### Cutting-edge education

Dynamic professors, small group teaching and a challenging mix of practical skills and language training, as well as international projects and competitions, define the College of Europe's extremely varied academic programme.

Prominent political leaders and decision-makers are regular guest speakers and enter into challenging discussions with students on European and international affairs.

The flying faculty bring together the most renowned experts in EU affairs, both academics and practitioners, and ensures that the curriculum maintains a constant link between theory and practice, making the College a unique laboratory of European integration.

The "College Formula" ensures that, for 10 months, students coming from all over the world live and follow together an intensive programme in a challenging and highly stimulating educational environment.

### History

The College of Europe was founded in 1949 by leading European figures such as Salvador de Madariaga, Winston Churchill, Paul Henri Spaak and Alcide de Gasperi in the wake of the first Congress of the European Movement in The Hague in 1948. The idea was to establish an institute where university graduates from many different European countries could study and live together in preparation for careers related to European cross-border cooperation. In 1992, the College of Europe established a campus in Natolin (Warsaw), Poland, at the time of the reintegration of the European continent after the fall of the Iron Curtain. In September 2024, the College of Europe opens its new campus in Tirana (Albania) in light of the European integration of the Western Balkans region.



TIRANA CAMPUS

**Welcome**  
to the laboratory of  
the European integration



TIRANA CAMPUS





## A LIFE-CHANGING EXPERIENCE



### Culture and nightlife

Tirana offers a vibrant lifestyle catering to diverse student interests. The city's cultural scene, located in the City Center and Bllok neighbourhood, features art exhibitions, music and film festivals, and theatrical performances. Recreational opportunities abound in prominent areas such as Lake's Gran Park and Rinia Park, Nene Tereza and Skanderbeg Square, as well as the Pazari i Ri neighbourhood.

Tirana's nightlife is vibrant and diverse, offering trendy clubs, live music venues, and cozy cafes. The social scene fosters a sense of community, enhancing the overall experience for young residents.

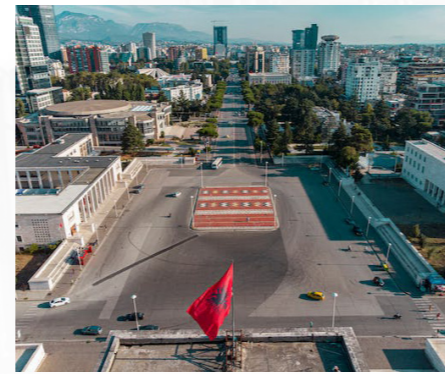
### Mobility

Navigating Tirana is facilitated by over 30 bus lines and three terminals. The city is easily walkable due to its flat terrain, and additional features such as bike lanes and eco-friendly transportation options promote sustainable and efficient mobility for students.

### Food Scene

Tirana's culinary landscape is a delightful blend of local and international flavours, influenced by Italian and Turkish cuisine. The cosmopolitan nature of the city is reflected in diverse dining options, providing a culinary journey for residents.

In conclusion, Tirana sets the stage for an enriching academic experience at the newly established College of Europe campus. We welcome you to a city that seamlessly integrates professionalism with cultural vibrancy—a perfect backdrop for your educational journey.



## PROGRAMME

### Master of Arts in European Transformation and Integration The EU and Southeastern Europe



The advanced MA programme in European Transformation and Integration, taught in Tirana, focuses on the EU accession process of the Western Balkans and provides students with expertise on the region. Beyond its academic focus, the programme aims at training future professionals working on files relating to EU enlargement and the challenges associated with European transformation in the Western Balkans.



### Admission, languages, fee (and scholarship)

The European Transformation and Integration programme is open to students of any nationality coming from a variety of disciplines, provided they meet the general academic requirements of the College. The programme aims to attract students with a background in political, economic and social sciences, who possess a keen interest in approaching questions surrounding the transformation and integration of Europe from a multifaceted perspective. Furthermore, graduates from other academic or professional backgrounds who demonstrate a high academic level and a genuine interest in EU affairs and/or Southeastern European studies are strongly encouraged to apply.

Students who do not come from a social science background and do not have a good understanding of the foundations of disciplines such as EU Studies, Political Science, International Relations and Economics are expected to obtain familiarity with these subjects through introductory courses before the start of the academic year. The introductory courses are obligatory for students with conditional admission and highly recommended to all others.

### Language requirements

Candidates need to demonstrate a very good level of English (equivalent to at least a C1 in accordance with the Common European Framework of Reference (CEFR) for Languages). Additionally, they should have an elementary level of French (at least an A1 in accordance with CEFR) in terms of both oral and written comprehension and expression. This proficiency must be proven by a recognised

international certificate (e.g., TOEFL with a minimum score of 100 and sub-scores of 25 on each section) or by a recommendation letter from a language teacher with reference to language levels in terms of either CEFR or the TOEFL Equivalency Table.

Candidates whose first language is English or French, or who have completed at least one full academic year of university studies in English or French, are exempt from demonstrating language proficiency. (French and English language levels are also monitored during the selection interviews). Students with no prior knowledge of the French language might still be considered as eligible candidates if their application is excellent, on the condition that they will achieve at least an elementary knowledge of French (A1) before the start of the introductory courses. Knowledge of any other language is considered to be an asset.

Students who do not yet possess at least an A1+/A2 level of French, will be required to follow an intensive French course during the introductory course period.

### Fees & scholarships

The fees for the academic year 2024/2025 amount to € 27,000 and encompass tuition, registration, examinations, as well as the study trip. Additionally, these fees cover on-campus accommodation, most meals, and overall board and lodging expenses.

Various scholarship opportunities are accessible through different sources. Exceptional applicants will be eligible for scholarships based on their outstanding applications.